

MERCURE

HOTELS & RESORTS

FUKUOKA MUNAKATA
RESORT & SPA



Mercure Fukuoka Munakata Resort & Spa

Mercure Fukuoka Munakata Resort & Spa is adjacent to Munakata Taisha Shrine which is registered as a World Heritage Site. The hotel will serve as a good base for sightseeing in the Fukuoka area, where you can enjoy nature and history at the same time.

Enjoy a restaurant serving local delicacies or soak in the outdoor bath to your heart's content.

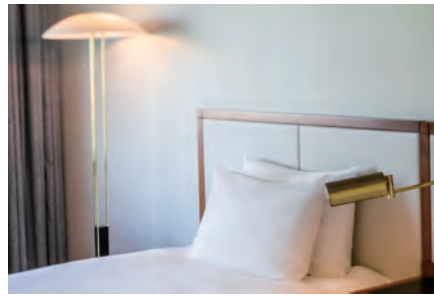
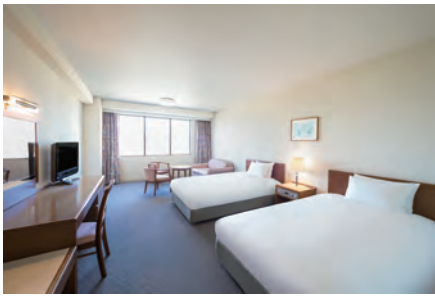
About the Hotel

291 Guest rooms
24 Conference and Banquet Hall
Maximum capacity: 700 people
Lounge, Restaurants, Garden pool
Hot spring (Public bath/Outdoor bath)

ALL-INCLUSIVE

The all-inclusive rate includes dinner, breakfast, drinks and snacks in the lounge, and activities including hot springs in the room rate. The hotel offers a wide range of services to make your stay as enjoyable and relaxing as possible, inviting you to experience the local culture through food, soothing aromas and various activities.

* Some drinks and activities are available for a fee.
Please note that lunch is not available.



Guest Room with Pine Groves and Ocean View

A spacious guest room of more than 36 sqm (approx. 387 sqft) with a scenery that brings you the changing seasons, the smell of the wind, and a journey where you will encounter discoveries and unseen impressions that will color your life. Enjoy the brilliant morning sun and the exquisite view.

<Guest Room Facility>

Bathroom
Sofa (Extra bed)
LCD TV (26 inch/32 inch)
Safety box
Coffee, Tea Set
Free Wi-Fi

291 Guestrooms

Classic Deluxe Suite (140 sqm/1,506 sqft) 1 Room
Classic Twin (36 sqm/387 sqft) 174 rooms
Japanese-Style (36 sqm/387 sqft) 90 Rooms
Classic Twin Japanese/Western-Style (36 sqm/387 sqft) 20 Rooms
Other rooms are available

Other Facilities

- Garden pool (Exclusively during summer season)
- Karaoke
- RV park
- Tennis court
- Table tennis area
- Co-working space

Activities

<Local Discovery>

An activity to learn about the unique atmosphere and story of the region, to see a spectacular view, and to experience the local culture and history.

Restaurant

<Breakfast Buffet>

A breakfast buffet that offers both Western and Japanese breakfast with menus that can be customized to your liking. Spend a luxurious morning planning your trip while enjoying breakfast using the local ingredients and food culture.
Open Hours: 7:00-9:30 (Last in 9:00)

<Dinner Buffet>

The dinner buffet offers a rich variety of dishes presented with a modern flair. We offer a signature menu that incorporates local ingredients, oshizushi, as well as other dishes and local dishes that are prepared fresh in front of guests. In addition, some drinks including beer, wine, and soft drinks can be enjoyed limitlessly.
Open Hours: 17:30-21:00 (Last in 20:30)

Hot Spring

“Genkai Satsuki Onsen” is a hot spring that came flowing out during the hotel construction. It is named for its location adjacent to the scenic Satsuki Matsubara. The mildly alkaline simple hot spring has indications such as neuralgia and recovery from fatigue. An outdoor hot spring rock bath is also available along with a hot spring public bath.
Open Hours: 15:00-23:00 / 6:00-10:00

ONSEN LOUNGE

Enjoy a relaxing moment in a calm space gently lit by soft light, listening to flowing music and feeling subtle fragrances. After relaxing in the hot spring, you can refresh and quench your thirst with the special amazake and tea.
*Drink offerings may vary depending on the time of day.

Open Hours: 15:00-23:00

Lobby Lounge

<Evening Social>

The lounge is a space where you will encounter the calm, relaxation and comfort you feel the moment you step into the hotel. Unwind at the lounge with a selection of alcoholic beverages such as sparkling wine and beer, as well as coffee and tea with some snacks.
Open Hours: 15:00-18:00

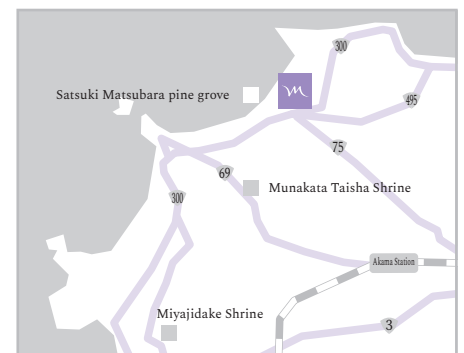
<Night Cap>

After your meal, enjoy some mature time at the bar with a glass of whiskey, brandy, shochu or other spirits. Enjoy a little night cap to sink in the moment before going to bed and calling it a day.
Open Hours: 21:00-23:00

Location of Hotel

Approximately 60 minutes by car from Fukuoka City and Kitakyushu City.

This resort hotel is an ideal base for sightseeing in the Fukuoka area. Located next to Munakata Taisha Shrine which registered as a World Heritage site, you can enjoy a relaxing holiday surrounded by beautiful nature. The environment is also conducive to try new activities such as beach horseback riding and marine sports while enjoying the view of the ocean.



Venue Name	Theater (Capacity)	School (Capacity)	Round Table (Capacity)	Stand-Up Dinner Party (Capacity)	Area (sqm)
MainHall	700	400	400	800	795
Meeting Room 1	280	144	180	280	353
Meeting Room 4	100	96	80	120	129
Meeting Room 6	70	60	50	80	123
Meeting Room 11	80	56	48	80	129

INFORMATION *Service hours and details may vary depending on circumstances. *Some images are rendering.

Mercure Fukuoka Munakata Resort & Spa | 1303 Tano, Munakata-shi, Fukuoka 811-3514, Japan | TEL: 0940-62-4111 | FAX: 0940-62-4000

| Hotel Website: <https://mercure-fukuokamunakata-resortandspa.jp/> | Hotel E-mail Address: munakata@drhm.jp